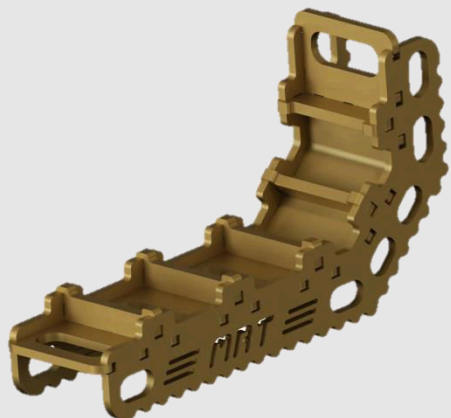


Angle Ram Support WSP-K



Support system for rescue rams designed to be used with all types and brands of tools available on the market. Perfectly adheres to the shape of spreading bodywork efficiently transferring the forces onto it. Provides safe and stable support in all necessary directions. Additional holes for belts or chains add up to versatility. Sturdy and durable made of 10 mm thick carbon steel. Suits modern vehicles.

KEY FEATURES

- A stable and non-slip base
- Durable and corrosion resistant
- Can be used in different orientations
- Suitable to use with all rescue rams available on the market
- To help you work safer and easier

TECHNICAL DATA

Max. load:	25 KN
Dimensions:	440 x 240 x 120 mm
Weight:	7,50 kg
Production technology:	Welded
Material:	Carbon steel 10 mm thick



RH BRANDBEVEILIGING
WIJ HELPEN U UIT DE BRAND!