








**DECISION MAKING TIC FOR FIREFIGHTING.
DURABLE, HIGH-RESOLUTION
THERMAL IMAGING CAMERA.**

KEY CAMERA SPECS

-  320 x 240 Thermal Sensor
-  57° Horiz Field of View
-  -20C (-4F) to 550C (1022F) Temp Detection
-  IP67 Ingress Protection
-  High Impact and Heat Resistant
-  300 Lumen LED Flashlight



Seek AttackPRO is our most robust handheld thermal imaging camera yet. Extremely durable with simple controls, AttackPRO combines a high-performance 320 x 240 thermal sensor in an ergonomic, fire ground rated package to help you attack fires smarter and more safely. Additionally, a powerful 300-lumen LED light is available at the touch of a button. The AttackPRO delivers unprecedented high-resolution thermal imaging in an affordable firefighting system.

Find the seat of the fire and make decisions faster when every second counts. See through smoke, visualize your plan, and execute.



KEY FEATURES

320 x 240 High-Resolution Thermal Sensor
76,800 temperature pixels for maximum image clarity and sensitivity

Waterproof Design
Durable and reliable design built with IP67 rating

Wide, 57-Degree Field of View
Easily scan a large area to identify hazards or victims in seconds

Long-Lasting Rechargeable Battery
Greater than 6 hours of continuous thermal imaging

Simple Operation. Purpose-Built for the Fire Ground
One button thermal operation, no confusing menus or settings, Get the job done efficiently and consistently

BENEFITS

Decision Making on Command
Direct Firefighters, water, and resources with expedited tactical precision

Robust Personal TIC
Equip the entire department with the first affordable decision making TIC

See Through Smoke. Flashlight Optional.
300 lumen LED flashlight available at the touch of a button

Search and Rescue
Find victims and self-rescue faster with a reliable personal TIC

Execute 360 Size-ups & Overhaul Faster
When seconds count, a Seek decision-making TIC saves time and lives

TECHNICAL SUMMARY

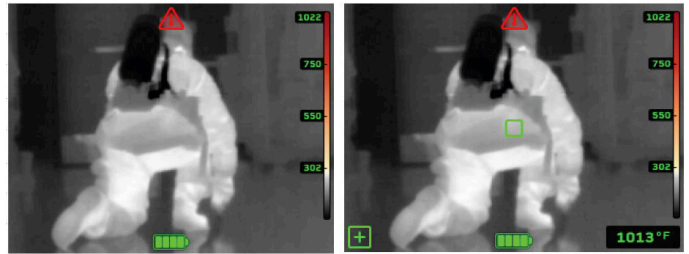
SPECIFICATIONS	DESCRIPTION
Thermal Sensor	320 x 240 (76,800 pixels)
Detection Distance	12 inches to 1,000 feet
Field of View	57° HFOV, 42° VFOV
Temperature Range	-4 to 1,022°F (-20 to 550°C)
Operating Temp	-4 to 131°F (-20 to 55°C) - no time limit up to 302°F (150°C) - max 15 min up to 500°F (260°C) - max 5 min
Frame Rate	> 25 Hz Fast Frame
IP Rating	IP67 Waterproof
Flashlight	300 Lumen LED
Display	3.5" Color with Corning® Gorilla® Glass
Thermal Sensitivity	< 70 mK
User Interface	On device 2 tactile button operation
Temp. Display Scale	Fahrenheit or Celsius
Image modes	2 Options (TIBASIC-default, and TIBASIC+)
Storage Media	NA
Battery	>6 Hours Thermal Imaging (w/o flashlight); >3hrs (with thermal AND flashlight)

300 LUMEN LED LIGHT



Seek AttackPRO combines powerful thermal insight and a bright LED flashlight in an intuitive, two button interface.

USER INTERFACE



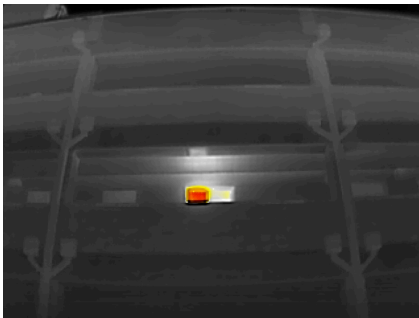
TI BASIC

Maintain your situational awareness with a simple and decluttered display showing greyscale and colorized regions

TI BASIC+

Enhance your tactics with a spot temp readout while still maintaining greyscale and colorized regions

THERMAL APPLICATIONS



360 SIZE UP



FIRE ATTACK



OVERHAUL

